

The background of the slide is a stylized American flag. The top left corner features the blue field with white stars, while the rest of the slide is dominated by the red and white stripes, which are curved and draped across the frame. The text is overlaid on the right side of the flag.

Office of
Economic
Adjustment
(OEA) Planning
Grant for
Ft. Lewis & McChord AFB
Growth Coordination Plan

**A presentation to the Military Affairs Committees
Dan Penrose, Project Manager
City of Lakewood
September 9, 2009**

Overview

- Growth of Military in the south Puget Sound region
- Federal planning funds available
- Two current projects
 - I-5 Transportation Alternatives & Operational Traffic Model
 - Ft. Lewis & McChord AFB Growth Coordination Plan
- Regional Stakeholders

Ft. Lewis and County Growth

<i>Ft. Lewis</i>	<i>2000</i>	<i>2009</i>	<i>Net Change</i>	<i>% Change</i>
Military	19,089	30,800	11,711	61.3%
<u>Dependents</u>	<u>29,015</u>	<u>46,816</u>	<u>17,801</u>	<u>61.3%</u>
Totals	48,104	77,616	29,512	61.3%
<i>Counties (including cities)</i>	<i>2000</i>	<i>2009</i>	<i>Net Change</i>	<i>% Change</i>
Pierce County	700,820	813,600	112,780	16.1%
<u>Thurston County</u>	<u>207,355</u>	<u>249,800</u>	<u>42,445</u>	<u>20.5%</u>
Totals	908,175	1,063,400	155,225	17.1%

Source: Adapted from April 9, 2009 presentation by Tom Knight, Ft. Lewis Deputy Garrison Commander using multiple Sources: 2009 Washington State Population Trends Report and 2012 populations figures based on estimates found in various Comprehensive Land Use Plans.

Municipal Growth in Study Area

	2000	2008	Net Change	% Change
City of Tacoma	193,556	202,700	9,144	4.7%
City of Lakewood	58,293	58,780	487	.8%
City of Lacey	31,226	38,040	6,814	21.8%
City of DuPont	2,452	7,390	4,938	201.4%
Town of Steilacoom	6,049	6,255	206	3.4%
Town of Roy	260	875	615	236.5%
City of Yelm	3,289	5,150	1,861	56.6%
Totals	295,125	319,190	24,065	8.15%

Of the 5,150 people living in Yelm, 2,211(41%) are Ft. Lewis soldiers, family members or civilians employed on post.

Of the 7,390 citizens of DuPont, 2,985 (40%) are Ft. Lewis soldiers, family members or federally employed civilians.

Military Growth



Joint Base Lewis-McChord will be the largest military installation on the west coast with more than 415,000 acres, including Yakima Training Center.

Military Growth



Joint Base Lewis-McChord is expected to support a population, on-base and in neighboring communities, of more than 125,000 people:

- Military personnel
- Families
- Civilian and contract employees
- Retirees and their families

Direct Impacts of Major Military Bases

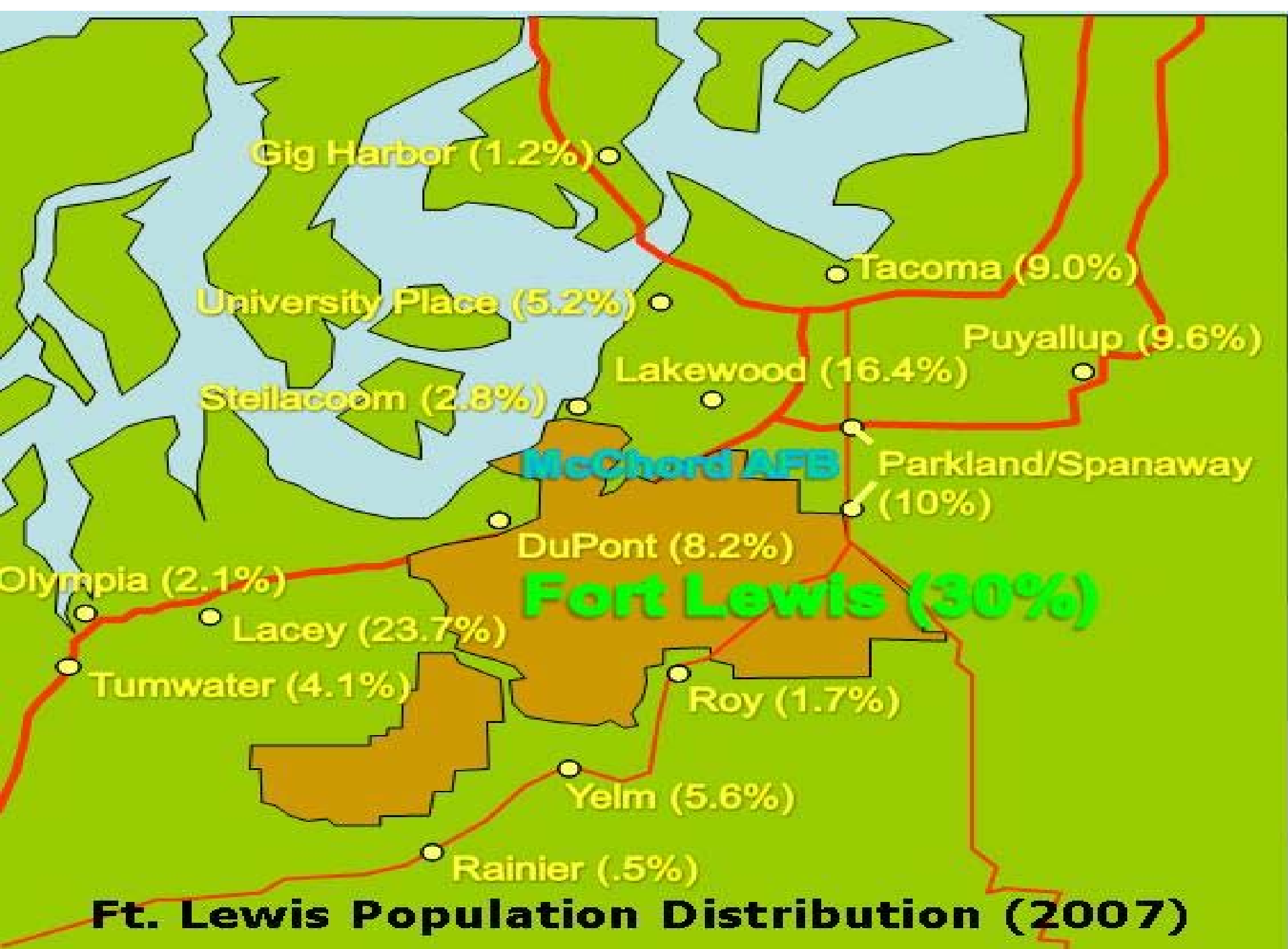
Pierce County, 2003

Employment, uniformed and civilian	34,624
Payroll	\$1.876 Billion
Military retiree pensions	\$524.9 million
TriCare payments to private providers	\$31.1 million

Contracts for goods and services

Pierce County vendors	\$ 25.2 million
Statewide	\$ 52.1 million
On-base retail spending	\$ 200.9 million
Net direct impact	*\$ 2.2312 Billion

*Reduced by on-base retail spending



Ft. Lewis Population Distribution (2007)

Continued Growth



The Department of the Army is currently conducting an Environmental Impact Study (EIS) for options that could increase the active-duty population by about 5,500 soldiers and 110 helicopters.

This would increase Ft. Lewis to 40,200 soldiers and 11,800 civilians, more than double the size from the previous decade.

Where does the funding come from?

“Economic adjustment assistance provides a community-based context for assessing economic hardships caused by DoD program changes by identifying and evaluating alternative courses of action, identifying resource requirements, and assisting in the preparation of an adjustment strategy or action plan to help communities help themselves. “ – Office of Economic Adjustment (OEA)

- The OEA at Department of Defense offers technical & financial assistance for communities adversely impacted by base closure or realignment, base expansion, or contract/program cancellation.
- Regional approach
 - One grant per installation
 - single “lead agency” convening all affected stakeholders
- 10% local match
- PLANNING-ONLY GRANT...NO CAPITAL FUNDING
- Stakeholders must work with Congressional leaders to gain capital appropriations
 - grant identifies needs
 - provides basis for funding requests

Two Part Approach

1. I-5 (Mounts Rd to SR 512) Transportation Alternatives and Operational Traffic Model
1. Ft. Lewis & McChord AFB Growth Coordination Plan
 - Assessment of Existing Conditions
 - Regional Housing
 - Fiscal Impact
 - Education
 - Transportation
 - Planning and Zoning
 - Public Utilities and Infrastructure
 - Public Safety and Emergency Services
 - Health and Social Services
 - Quality of Life
 - Public Engagement, Regional Coordination and Implementation
 - Summary and Deliverables



I-5 Transportation study will:



- Assess if the local road system is sufficient to alleviate I-5 congestion
- If not, determine alternatives exist that would alleviate the congestion and safety issues caused by the growth of Ft. Lewis & McChord AFB.

Ft. Lewis and McChord AFB Growth Coordination Plan



The plan seeks to address:

1. *Where is the future growth going?*
1. *Do the communities like where future development is headed, and do they have the tools to shape more desirable growth patterns?*
1. *Are the communities doing what is necessary to accommodate the needs of the soldiers, airmen and their families?*

Growth Coordination Plan objectives

- Identify and assess **existing conditions**
- Determine **future needs** of an increased military population.
- Develop short term and long term **priorities and potential funding sources** to accommodate this growth.
- Develop **planning, coordination and implementation strategies** that help achieve the long term strategic goals of the stakeholders during this period of growth and change.
- Maintain a **central point of coordination** for all major stakeholders who are impacted by the expansion of Ft. Lewis.
- Promote **regular communication** with all local and regional groups and committees that discuss military installation infrastructure and service issues and concerns.
- Establish a **clear set of action steps** to local communities about managing future growth and demands for services.



McNeil Island

Anderson Island

University Place

Lakewood

Steilacoom

Puyallup

McChord AFB

Silcox Island

Barlow Island

Ft. Lewis

Enchanted Island

DuPont

Spanaway

5

Lacey

Marvin Rd SE

Spanaway McKenna Hwy

Meridian Ave E

Roy

Mountain Hwy E

© 2009 Europa Technologies
Image U.S. Geological Survey
© 2009 Tele Atlas
Image © 2009 DigitalGlobe

Yelm

W Yelm Ave

352nd SWS

McKenna Tanway

© 2009 Google

6.87 mi

Imagery Date: Nov 9, 2007

47° 04' 39.68" N 122° 32' 24.42" W

Eye alt 23.70 mi

Housing

Where to house the new influx of residents?

The challenge is how to provide sufficient off-base housing at affordable prices in the surrounding communities to meet the increased demand.



- Plan Deliverable

- Regional Housing Market Study that provides housing requirements based on military and study area demographics.

Fiscal Impact

Ft. Lewis has indicated that almost \$4 billion dollars worth of construction projects in the next five years, including:

- group barracks
- dining facilities
- motor pools
- administrative buildings
- training areas.



● Plan Deliverable:

- Economic Impact Study to assesses the types of businesses and services needed to meet demand from military growth.

Education

Department of Defense estimates that an additional 4,500 students will come to Ft. Lewis by school year 2011.

- Clover Park School District operates all seven schools on Ft. Lewis and McChord AFB
- Most schools average 50 years old and are in significant disrepair and over capacity.
- Troop deployments and influx of new personnel makes forecasting especially difficult for school districts

● Plan Deliverable:

- Existing Capacity and Expected Demand Assessments for both K–12 and College Vocational level

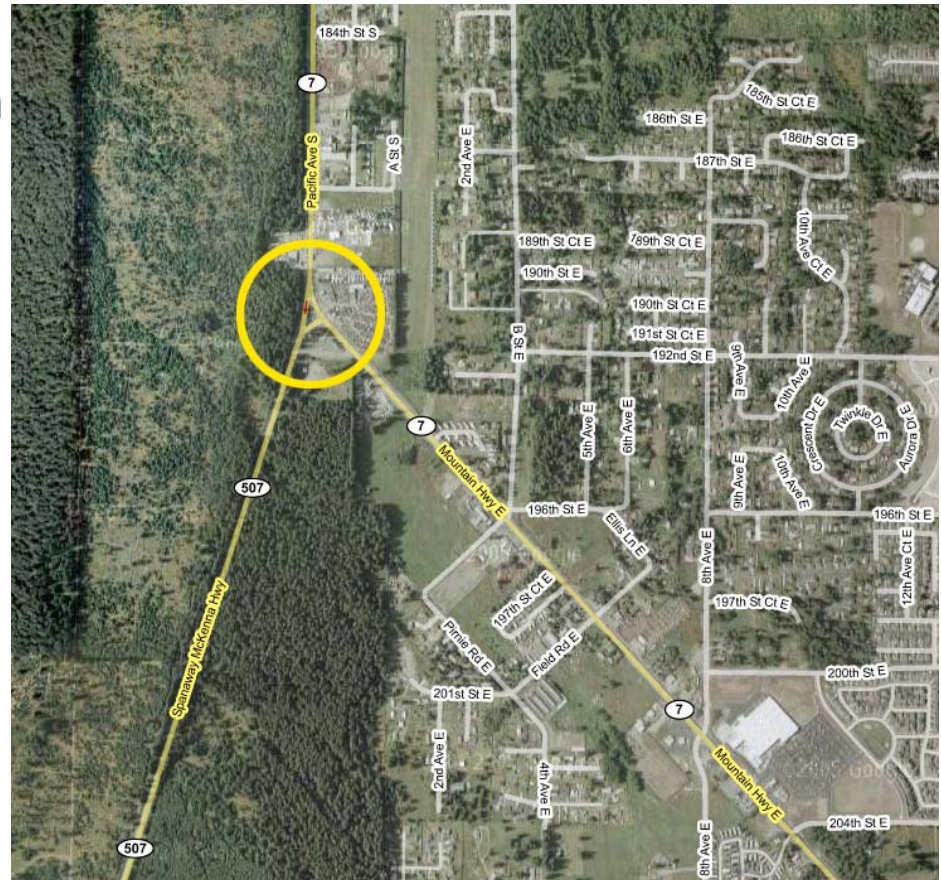


Transportation

What are the impacts on regional transportation mobility resulting from the expected population growth at Ft. Lewis and McChord AFB?

Need to evaluate existing and future capacity and level of service of the local major streets and state highways other than the Interstate 5 corridor.

- Plan Deliverable:
 - Transportation Access and Impact Study



Additional Tasks

- **Planning and Zoning compatibility**
 - Consistency of stakeholder comprehensive plans
- **Public Utilities and Infrastructure**
 - Adequacy and needs of water system, sewer system, solid waste
- **Public Safety and Emergency Services**
 - Capacity and service levels
- **Health and Social Services**
 - Capacity, locations and service levels to meet increased demand
- **Quality of Life**
 - Parks and recreation, arts and cultural facilities, libraries, etc.

Public Engagement, Regional Coordination and Implementation

9 cities, 2 counties, 5 school districts and 12 special
service districts

+

over 500,000 people within the urbanized Study Area

+

the culture and traditions of Washington State residents

=

MEETINGS!

Stakeholders



Bethel School District



ECONOMIC DEVELOPMENT BOARD
FOR TACOMA - PIERCE COUNTY



Project Status

- I-5 Transportation Alternatives and Operational Traffic Model
 - Project began in March 2009
 - Project on schedule
 - Technical Review Committee meetings held in April, June, September
 - Final report expected Summer 2010
- Growth Coordination Plan
 - \$1,292,589 grant awarded by OEA in August
 - RFP Process and Consultant Selection this Fall
 - Stakeholder outreach planned following consultant notice to proceed
 - Project should be completed by December 2010.

Lakewood's Commitment to a Regional Approach



The Growth Coordination Plan will produce data, documents and strategies that can be used by surrounding communities.

But by itself this won't lead to a coordinated approach to planning for growth at Lewis and McChord.

The City of Lakewood is committed to a strategy that ensures

- ongoing coordination
- communication
- monitoring stakeholder needs

to ensure that this planning effort is sustained.

For more information:

OEA website

<http://www.oea.gov>



City of Lakewood

Dan Penrose: 253-983-7772

dpenrose@cityoflakewood.us



<http://www.cityoflakewood.us/departments/economic-development/military-growth.html>